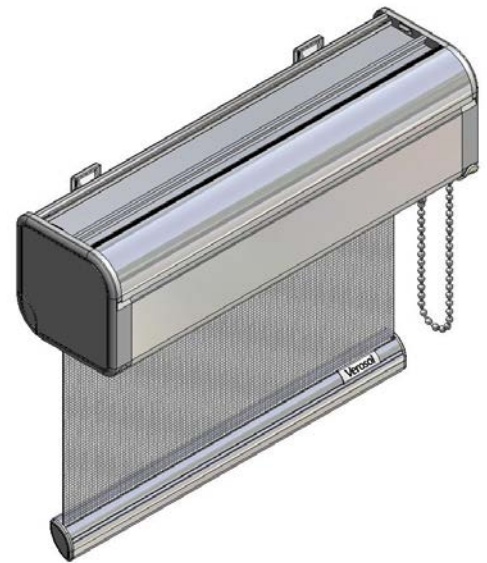


# Rollerblind QS82 **Cassette**

## Product information

One of the most remarkable feature of the cassette system is the low noise chain control. Additionally the operation is very smooth and easy due to the perfectly balanced lift assisting springs.



## Technical information

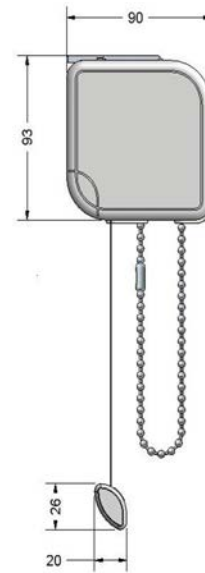
<b>Product Code</b>	QS82.0	QS82.4
<b>Product Name</b>	Roller blind Cassette	Roller blind
<b>Operation</b>	Chain Operation	230V AC Somfy
<b>Tube</b>	<b>Material</b>	Extruded Aluminium ∅ 44mm, 49mm, 57mm
		Extruded Aluminium
<b>Dimensions</b>	<b>With</b>	400mm min - 3000mm max (depending on tube and fabric)
	<b>Drop</b>	300mm min - 4000mm max (depending on tube and fabric)
	<b>Maximum Area</b>	8m <sup>2</sup>
		9m <sup>2</sup>
<b>Cassette</b>	<b>Material</b>	Extruded Aluminium Alloy- Asymetric Profile
	<b>Dimensions</b>	90mm W x 93mm H
<b>Bottom Rail</b>	<b>Material</b>	Extruded Aluminium Alloy- Asymetric Profile
	<b>Dimensions</b>	20mm W x 25mm H
	<b>Colours</b>	RAL 9001, 9010, 9016, Clear Anodised
	<b>Paint</b>	Electrostatic Powder coated and Baked
<b>End Caps</b>	<b>Material</b>	UV Stabilised Polymer Acrylic
	<b>Colours</b>	Grey,White,Black
<b>Chain</b>	<b>Material</b>	Aluminium or Stainless Steel
<b>Installation Brackets</b>	<b>Material</b>	Press formed Steel
	<b>Operation</b>	Top or Face Fixing - concealed when installed

# Rollerblind QS82 **Cassette**

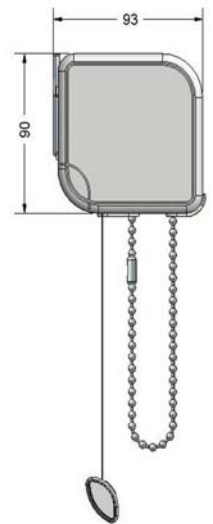
## Optional

<b>Guiding</b>	<b>Angle</b>	Up to 15° angle from vertical
	<b>Maximum With</b>	1500mm
	<b>Maximum Area</b>	6m <sup>2</sup>
	<b>Cable</b>	Steel
<b>Bottom Installation</b>	<b>Material</b>	Stainless Steel
<b>Bracket</b>	<b>Material</b>	Stainless Steel
<b>Guiding Channels</b>	<b>Material</b>	Extruded Aluminium Alloy U profile
	<b>Colours</b>	RAL 9001,9016,9010, Clear Anodised
	<b>Dimensions</b>	45mm W x 21mm H

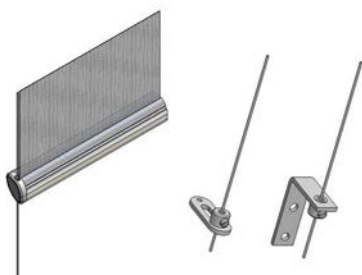
## System diagrams



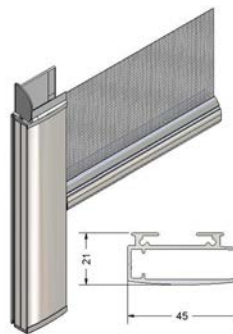
*Top Fix*



*Face Fix*



*Guiding Wire*



*Channels*