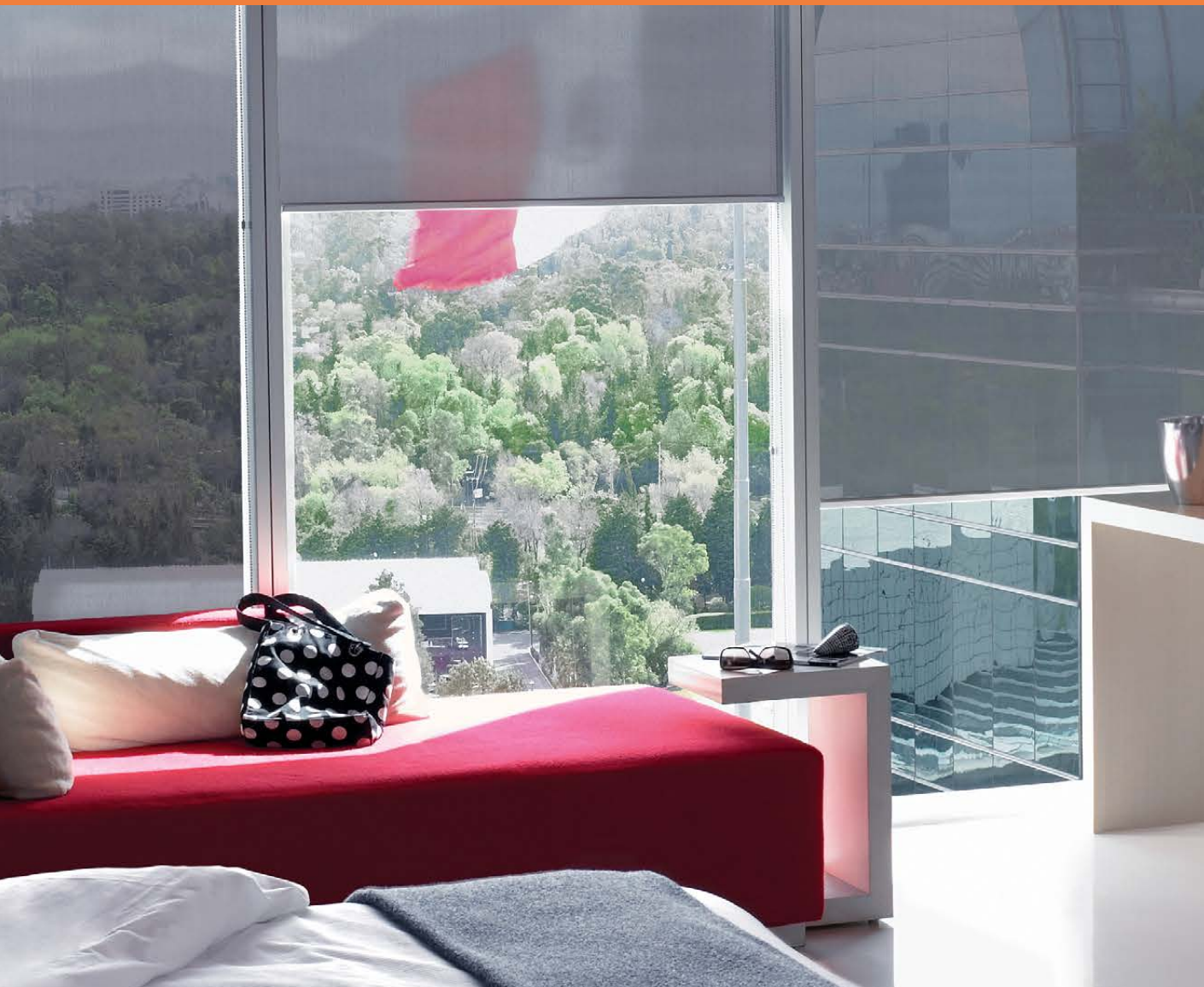


SILVERSCREEN PERFORMANCE

Best Performing Solar Screen



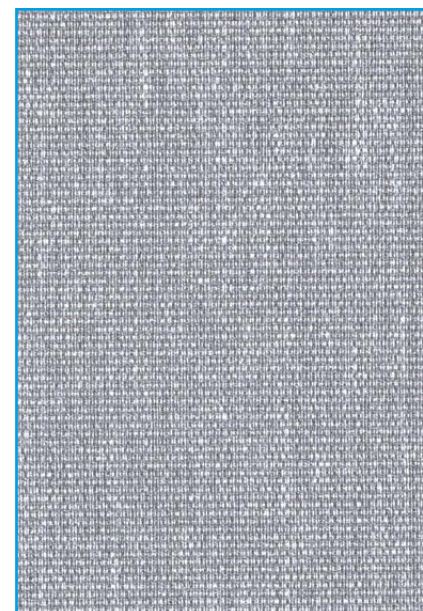
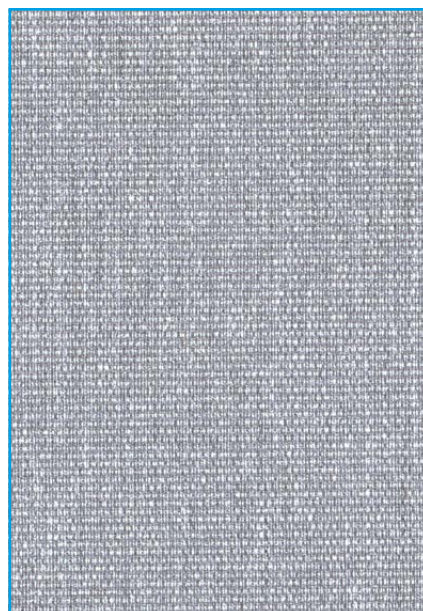
The ultimate solution for solar heat and light control

- Highest solar reflectance of 82% provides superb heat and light control
- Lowest-E fabric provides excellent insulation properties
- Openness factor of 2% or 4% provides clear view-through
- Excellent solution to reduce cooling and heating requirements in buildings
- Energy savings and indoor application result in low total cost of ownership

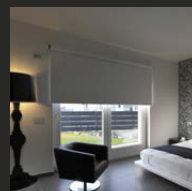
Expand your comfort zone

Verosol

Nr. 122039000001701



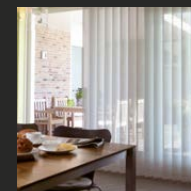
Applications for SilverScreen Performance:



Roller Blinds



Panel Tracks



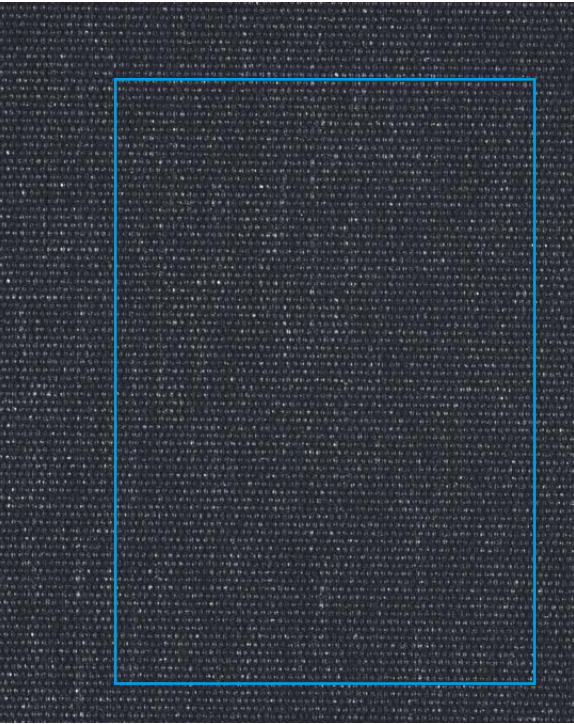
Verticals



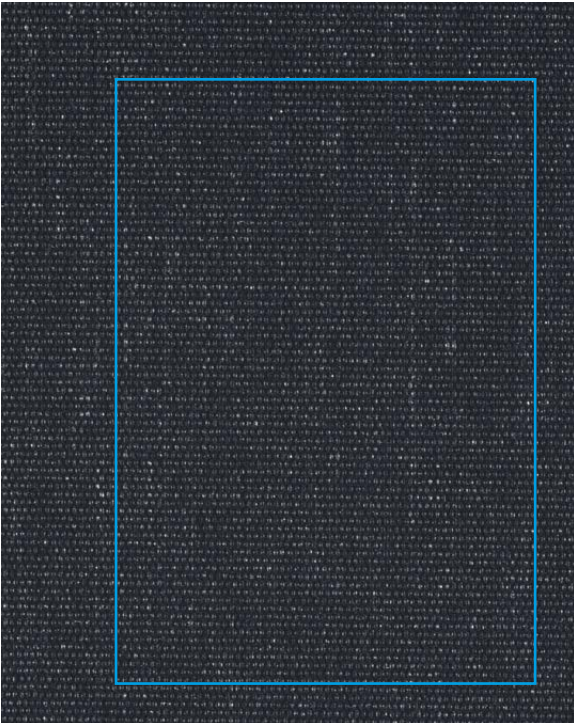
Expand your comfort zone

Verosol

Transparency



202 2% OF Lowest-E Screen







205 4% OF



Specifications SilverScreen Performance

	Thickness (mm)	0.50
	Weight (g/m²)	400
	Width (cm)	320 (max.)
	Composition	PVC / Glass – 64% / 36%
	Flame retardant standards	NFP 92503 specification M1, NFPA 701, BS 5867 Part 2 Type B, AS 1530
	Environmental standards	ISO 14001, Greenguard Gold, Ecospecifier

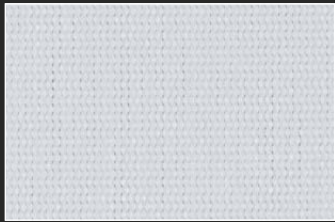
	White ED01 2% OF	White ED01 4% OF	Black EB01 4% OF	
	Solar reflection outside	82%	77%	76%
	Light transmission	3%	6%	4%
	Openness factor	2%	4%	4%
	IR emissivity (metal side)	0.05	0.16	0.16

	High performance glazing (reference glazing D EN 14501)	Glazing performance	White ED01 2% OF	White ED01 4% OF	Black EB01 4% OF	Performance improvement (max.)
	Light transmission	60%	2%	4%	3%	97%
	G-value / SHGC	32%	12%	14%	14%	63%
	U-value in W/m²K	1.1	0.7	0.7	0.7	36%
	Glare rating according to EN 14501	3	3	3	3	

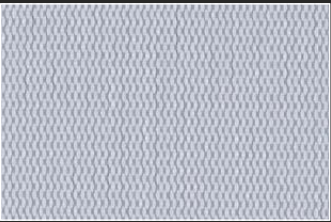
Optical properties are measured according to EN 14500, ISO 9050 & EN 410. High performance glazing is Reference glazing D from EN 14501. For more information about technical data, energy savings and worldwide distribution, refer to www.verosol.com. Disclaimer: The technical data are based on average data and are subject to production tolerances.



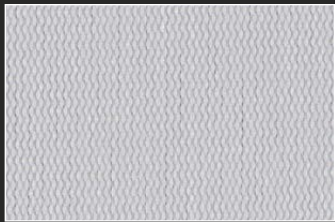
10 Colours



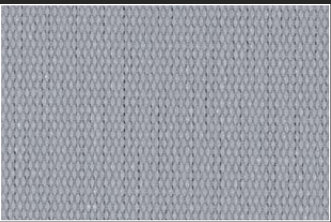
White ED01
2% and 4%



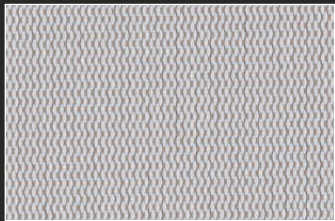
Light Grey ED03
2% and 4%



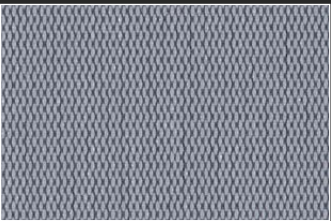
Beige ED02
2% and 4%



Misty Grey EC01
4%



Dark Beige ED04
4%



Steel Grey EC02
2% and 4%



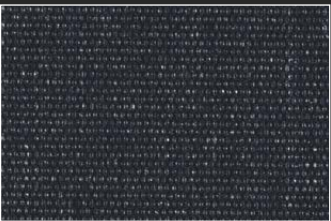
Bronze EB03
2% and 4%



Dark Grey EB02
2% and 4%



Chocolate Brown EB04
4%



Black EB01
2% and 4%

The colours shown may vary from the supplied fabric due to batch variation in the transfer printing process.