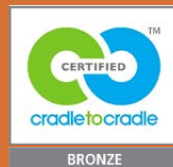


EnviroScreen

Most Sustainable Solar Screen



100% PVC free metallised recyclable polyester screen

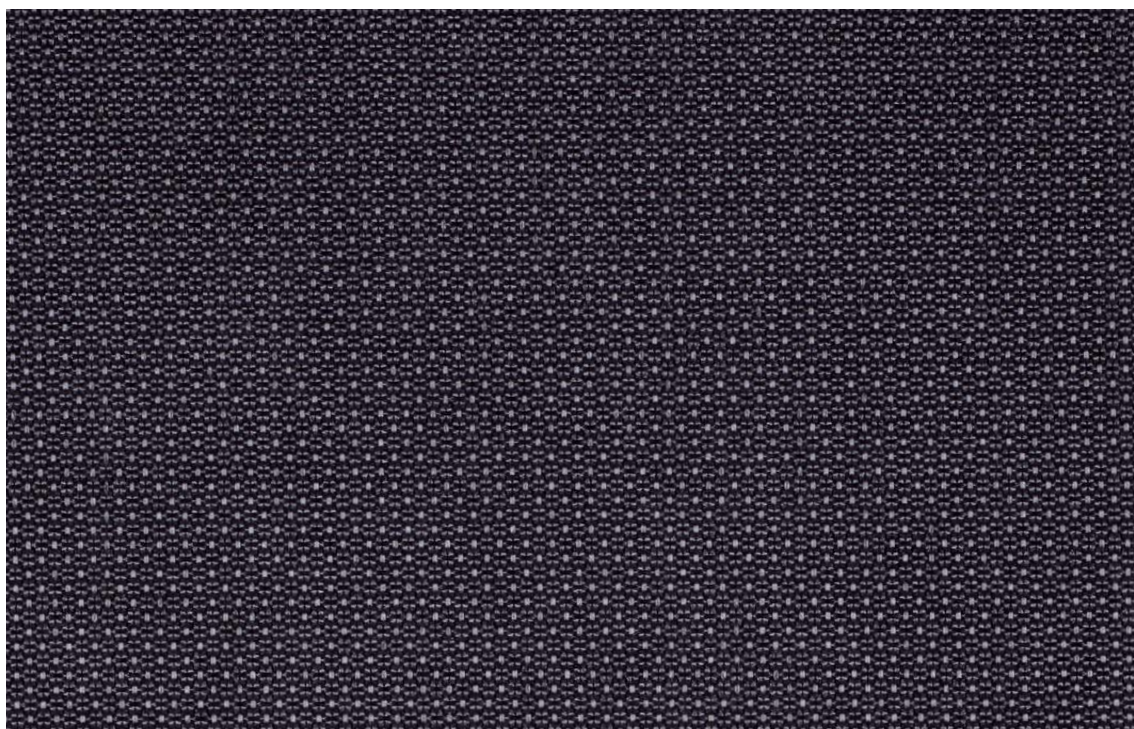
- High performance screen designed to meet the highest environmental standards
- Best performing Cradle to Cradle screen: excellent visual and thermal comfort
- Screen with a textile appearance
- Available in a width up to 3 meter



Verosol

Expand your comfort zone

Transparency

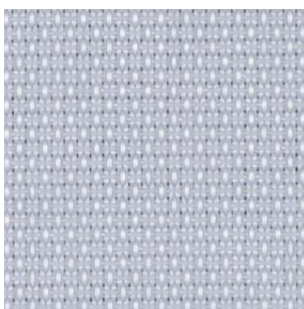


802



2% OF

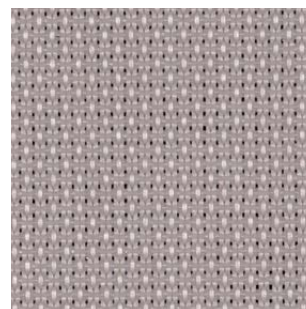
Customers favourites



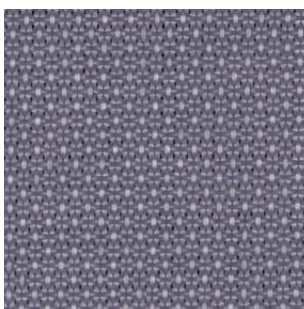
Light Grey
000



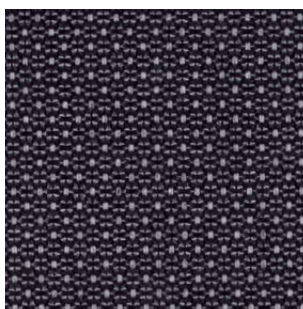
Sand Beige
741



Dark Beige
765



Steel Grey
936















Dark Grey
998



Black
829

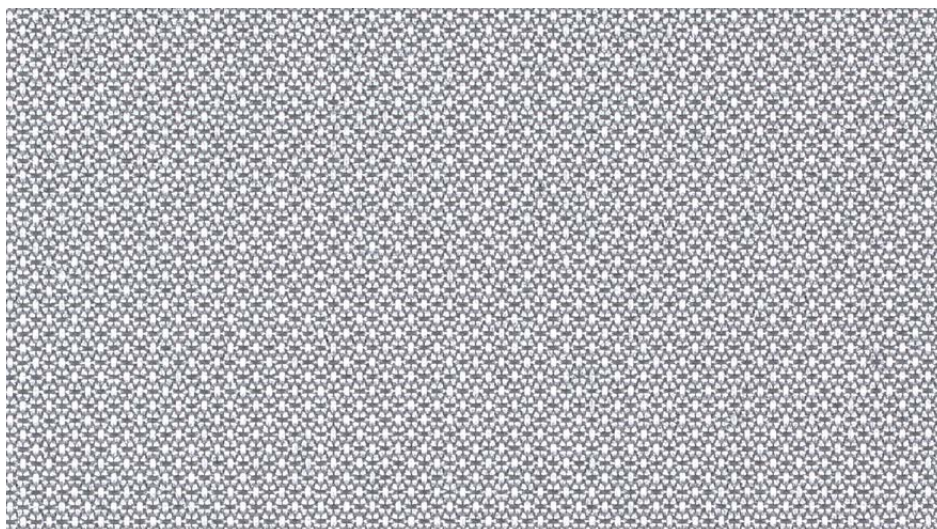
The colours shown may vary from the supplied fabric due to batch variation in the printing process. Please visit www.verosol.com to order samples of your choice.

Specifications EnviroScreen

	Composition	100% PET Inherent FR			
	Weight (g/m²)	220			
	Thickness (mm)	0.46			
	Width (cm)	300 max.			
	Openness factor (OF)	2%			
	IR emissivity (metal side)	0.19			
	Flame retardant standards	EN 13501-1 B-s1,d0, DIN 4102 B1, BS 5867 Part 2 Type B, NFPA 701, AS/NZS 1530.3 (0-0-0-1)			
	Environmental standards	Cradle to Cradle Bronze, OEKO-TEX Standard 100 Class IV, Greenguard Gold, Greenguard (LEED), HPD 2.1, RoHS 2, Reach, Ecospecifier, PVC free, Formaldehyde free, Halogen free, Phthalate free, Antimicrobials free			
			Light Grey 000	Black 829	
	Solar reflection outside		74%	74%	
	Light transmission		4%	2%	
	Visual contact according to EN 14501		2	2	
	Glare rating according to EN 14501		3	3	
Solar control double glass (glazing D EN 14501)		Glazing performance	Light Grey 000	Black 829	Performance improvement (max.)
	Light transmission	60%	3%	2%	97%
	g-value / SHGC	32%	15%	15%	53%
	U-value (W/m²K)	1.1	0.8	0.8	27%

Optical properties are measured according to EN 14500, ISO 9050, ASTM C1371 & EN 410. For more information about technical data, energy savings and worldwide distribution, refer to www.verosol.com. Disclaimer: The technical data is based on average data and is subject to production tolerances. All technical details per colour available upon request. Subject to misprints, errors and technical modifications.





Cradle to Cradle Certified Product Scorecard

MATERIAL HEALTH	Bronze
MATERIAL REUTILIZATION	Silver
RENEWABLE ENERGY & CARBON MANAGEMENT	Silver
WATER STEWARDSHIP	Bronze
SOCIAL FAIRNESS	Bronze
OVERALL CERTIFICATION LEVEL	Bronze



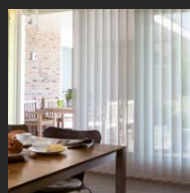
Applications for EnviroScreen:



 Roller Blinds



 Panel Tracks



 Verticals

Verosol

Expand your comfort zone

